

VM-0110

Smart Logger (다-채널 신호분석기)



VM-0110 특징

- 기본 6채널에서 최대 72채널까지 확장가능
- 온도센서, 압력센서, 습도센서, 진동가속도계 등 다양한 센서와 연결가능
- 스펙트럼, 파형분석, 1/1~1/12옥타브분석 등 다양한 데이터분석기능 가능
- 컴퓨터로의 빠른 데이터 전송
- 가속도계, 서보형가속도계, 전압출력센서 등과 사용가능

VM-0110 HARDWARE

Standard Function

Unit	Functions	Content	Description
Basic Unit(VM-0110)	See below.	See below.	See below.
Measuring Unit	Measuring Channel No.	6 Channel	Analogue input module ×2 loading
	Variable Digital Filter	6 th butterworth LPF	Set cut-off frequency from software
	Variable Gain Amplifier	×1, ×10, ×100	Set by software (each channel individual)
	Sampling Rate	Max. 102.4kHz/ch	(at 12 channel logging)
	A/D Resolution	16bit	
	Monitor Signal Output	Analogue voltage signal	1-channel selection by rotary switch
	Analogue Signal Output	Analogue voltage signal	Sinusoidal waveform(10~2kHz), M-series random waveform
	Host Interface	IEEE 1394	Communication with host PC
	Digital I/O	Input ×2, Output ×2	Input(external trigger, synchronous signal), Output(synchronous signal)
	Card Slot	PCMCIA ×1, Card bus slot ×1	Memory card for data recording Wireless card load(planing)
Base Unit	Power Supply	24VDC	
	Power Consumption	60W	At VD-0110 ×5, TYPE 1 ×12 loading
	Operation Environment	0 ~ +50 °C	
	Outer Dimensions	268W ×210H ×246D mm	At VD-0110 ×5 loading) without protrusion
	Weight	6.6kg approx.	At VD-0110 ×5 loading)

VM-0110 SOFTWARE

Standard Function

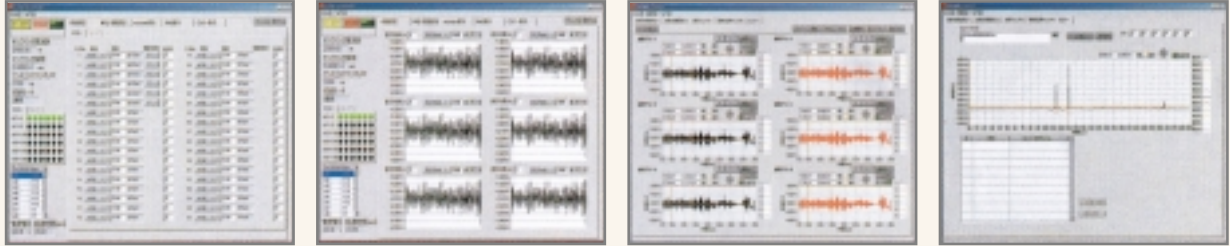
Unit	Functions	Content	Description	
Logger [DS-0110R]	Logging Channel No.	Max. 72 channel	-----	
	Logging Operation	One-shot, Continuous	-----	
	Trigger Function	Level, external signal, Timer	Single operation, repeat operation, Post trigger can be set	
	Display Function	Waveform, Compressed waveform, rms	Converts to physical unit	
	Memory Function	voice memo, text memo	Sound function for PC is necessary for voice memo	
	Logging Time	Depends on HDD space	6ch, 1kS/s, 10MB consumes at 10min.	
	Remote Control Function	Control of VM-0110 unit	Logging channel, sampling rate, Amp(×1.10.100)range	
	Analysis [DS-0110A]	Time-series Waveform display	Any zoom, auto-scale	Select 1ch/6ch
		Time-series	Search function	Peak value, threshold
		Waveform Edition	Calculation between cursor	Max. value, min value, average value, rms, amplitude(p-p), time difference
Differential, integral			1-time differential, 2-time differential, 1-time integral, 2-time integral	
DC process			Delete extract	
Calculation among channel		+ - × ÷		
Unit conversion function		Default unit is setting unit at logging		
Any filter function		High-pass, Low-pass, band-pass and band stop		
Envelope Zoom			-----	

Frequency Axis Display		Windows function	Hanning+haming, Rectangular, Flat Top, Blackman etc	
		Cursor function	Frequency difference, Level Difference	
		Zoom function		
Frequency Analysis		Spectrum	Amplitude, power	
	Mutual spectrum	Cross-spectrum, transfer characteristic Coherence		
	Octave band analysis	Band width(1/1, 1/3, 1/6, 1/12) Logarithmic average process		
Voice Memo Recall	Voice file recall	Display of memo mark, reproduction of voice memo (needs wave file reproduction software)		
File Output	Time-series waveform data, analysis data	CSV file, F2 format file (for vibration test type)		
Printing	Time-series waveform graph, analysis graph	Screen printing		
Other	Temperate save	Save of environmental setting	-----	

Optional Function

Unit	Functions	Content	Description
Measuring Unit (VM-0110)	See	See	Analogue signal output is nil due to expansion unit.
	Measuring Unit	Measuring Unit	
Analogue Input Module	See below.	See below.	See below.
	VA-0110C	Pickup connect ×3	
VA-0110S	Pickup connect ×3	Servo or Piezo type acceleration pickup	Frequency : DC/0.1~500kHz Max.Input : ±10V
VA-0110X	General signal input ×3	Voltage current Constant current drive PU.	Frequency : 3~60kHz Max.Input : ±10V, 0~20mA, Drive current 3.5mA
Connection cable	Synchronous measurement signal I/O	Connection of basic unit	Synchronous measurement over 37ch
	Battery	Battery drive	Output 24V, 7.5Ah Continuous drive over 4hrs (At TYPE 1 ×12, 36ch measurement)
Card type Memory	Data save	PCMCIA, Card-bus	Save in this unit only
On-line Setting Software [DS-0110HD]	On-line measurement	Logging condition setting by only this unit	-----
Host PC	Note PC		Check necessary software install and operation
	Communication Card	Windows 2000 IEEE 1394 I/F card	IEEE 1394 communication cable is necessary

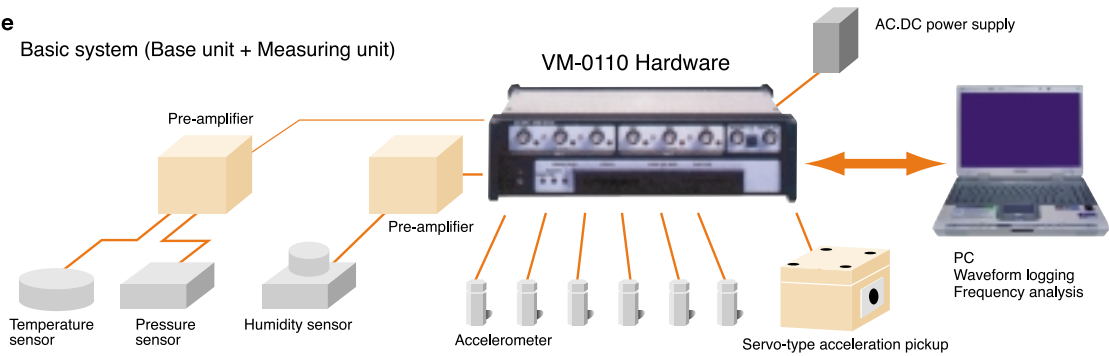
Data 분석 Software



제품구성도

■ Example

VM-0110/6 Basic system (Base unit + Measuring unit)



제품적용예

